

DH Series - Electromagnetic Fire Door Holders



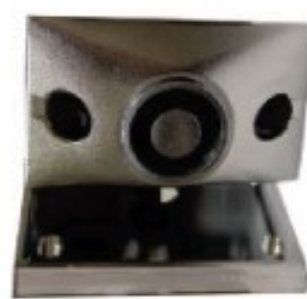
DH24FB
(Brass Plated)



DH24FC
(Chrome Plated)



DH24FPC
(Powdercoated)



DH24GC1



DH24WC

DESCRIPTION

DH series fire door holders are constructed of the finest materials and workmanship available. The door holder is made of durable die-cast metal and offered in a high luster plated or powdercoated finish.

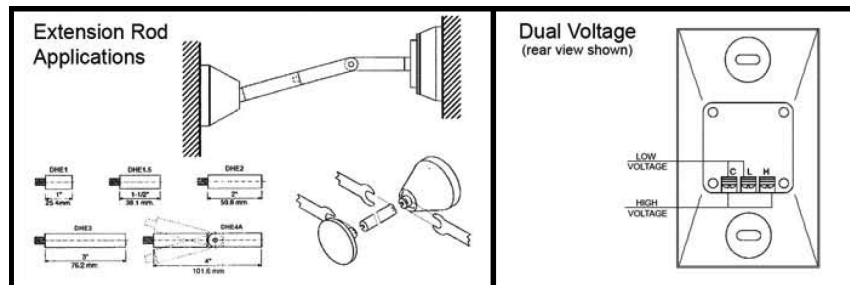
Other features include standard dual voltage ac or dc inputs of 24 & 120V models. While reducing stocking requirements, model 24120 draws a mere 20 mA @24VDC lowering overall job costs. (In large installations the cost savings can be substantial).

Other features: single or double coil floor mounting, surface mounting and direct wall mounting. No brackets are required. The DH series door holders offer a new installation technique using an adhesive template assuring alignment without secondary adjustments.

Accessories include extension and misalignment rods (various lengths) enabling parallelism between door and wall at distances greater than 12 inches and misalignment over 4 inches.

Aiding in installation is the aircraft quality DH drill that reduces installation time and provides a near perfect alignment of catch-plate and armature - again, lowering overall installations costs.

Basic units offer superior holding force and low residual magnetism. Model 24120 can operate at higher listed voltages producing holding forces in excess of 100lbs. (45.3kg.) For special applications.



STANDARD FEATURES

- Very low current draw
- Dual voltage inputs
- Terminal Block Connections
- High holding force
- Low residual magnetism
- Double chrome plating
- Mounting hardware & instructions

OPTIONAL FEATURES

- Plated or Powdercoated finish
- Double brass plating/powdercoated
- Extension and Misalignment Rods
- Surface mounting back box
- Time saving Drill Fixture (for mounting catch plate).

Specifications subject to change without notice.

DH Series - Electromagnetic Fire Door Holders

PERFORMANCE DATA

| MODEL | VOLTAGE | DC/mA | AC/mA | TERMINALS | LB. | KG |
|-------|---------|-------|-------|-----------|-----|------|
| 24120 | 24V | 20 | 19 | C&L | 40 | 18.1 |
| | 120V | - | 20 | C&H | 35 | 15.8 |

NOTE: Holding forces listed in above table corresponds with shaded values, non shaded values are slightly less.

| MODEL | VOLTAGE | DC/mA | AC/mA | TERMINALS | LB. | KG |
|-------|---------|-------|-------|-----------|-----|------|
| 24120 | 120V | - | 100 | C&L | 110 | 49.8 |

HIGH HOLDING FORCE/SPECIAL APPLICATIONS:

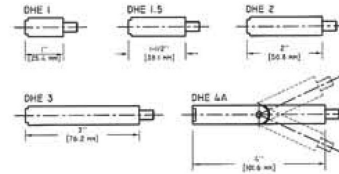
To obtain performance values in table above apply high listed voltage to low voltage terminals (C & L).

NOTE: This configuration can only be applied to model 24120.

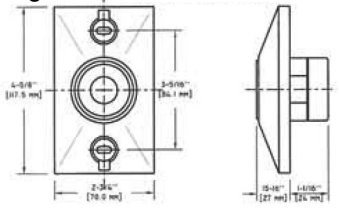
ACCESSORIES

Extensions:

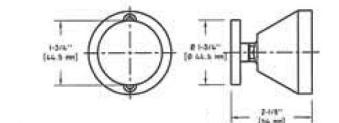
Extension rods



Magnetic Door Holder



Door Holder Swivel base



DOOR HOLDER PARTS LIST

| PART NUMBER | DESCRIPTION | MODEL |
|----------------------------|--|-------------|
| Flush Mount | | |
| 0500-01890 | RSG Door Holder, Flush Mount, Chrome Finish, 120V | DH24120FPC |
| 0500-01900 | RSG Door Holder, Flush Mount, Brass Finish, 120V | DH24120FB |
| Surface Mount | | |
| 0500-01910 | RSG Door Holder, Surface Mount, Chrome Finish, 120V | DH24120SPC |
| 0500-01895 | RSG Door Holder, Surface Mount, Chrome Finish, 220V | DH24220SPC |
| 0500-01920 | RSG Door Holder, Surface Mount, Brass Finish, 120V | DH24120SB |
| Ground Mount | | |
| 0500-01930 | RSG Door Holder, Ground Mount, Chrome Finish, <i>Single</i> Coil, 120V | DH24120GPC1 |
| 0500-01940 | RSG Door Holder, Ground Mount, Brass Finish, <i>Single</i> Coil, 120V | DH24120GB1 |
| 0500-01950 | RSG Door Holder, Ground Mount, Chrome Finish, <i>Double</i> Coil, 120V | DH24120GPC2 |
| 0500-01960 | RSG Door Holder, Ground Mount, Brass Finish, <i>Double</i> Coil, 120V | DH24120GB2 |
| 1" Extension Rods | | |
| 0500-01970 | RSG Door Holder Extension Rod, 1", Chrome Finish | DHE1PC |
| 0500-01980 | RSG Door Holder Extension Rod, 1", Brass Finish | DHE1B |
| 1.5" Extension Rods | | |
| 0500-01990 | RSG Door Holder Extension Rod, 1.5", Chrome Finish | DHE1.5PC |
| 0500-02000 | RSG Door Holder Extension Rod, 1.5", Brass Finish | DHE1.5B |
| 2" Extension Rods | | |
| 0500-02010 | RSG Door Holder Extension Rod, 2", Chrome Finish | DHE2PC |
| 0500-02020 | RSG Door Holder Extension Rod, 2", Brass Finish | DHE2B |
| 3" Extension Rods | | |
| 0500-02030 | RSG Door Holder Extension Rod, 3", Chrome Finish | DHE3PC |
| 0500-02040 | RSG Door Holder Extension Rod, 3", Brass Finish | DHE3B |
| 4" Extension Rods | | |
| 0500-02050 | RSG Door Holder Extension Rod, 4", Chrome Finish | DHE4PC |
| 0500-02060 | RSG Door Holder Adjustable Extension Rod, 4", Chrome Finish | DHE4APC |
| 5" Extension Rods | | |
| 0500-02070 | RSG Door Holder Extension Rod, 5", Chrome Finish | DHE5PC |
| 0500-02080 | RSG Door Holder Extension Rod, 5", Brass Finish | DHE5B |
| Catch Plates | | |
| 0500-02090 | RSG Door Holder Catch Plate, Chrome Finish | DHCPPC |
| 0500-02100 | RSG Door Holder Catch Plate, Brass Finish | DHCPB |
| Swivel Base | | |
| 0500-02110 | RSG Door Holder Swivel Base, Chrome Finish | DHSBPC |
| 0500-02120 | RSG Door Holder Swivel Base, Brass Finish | DHSBB |